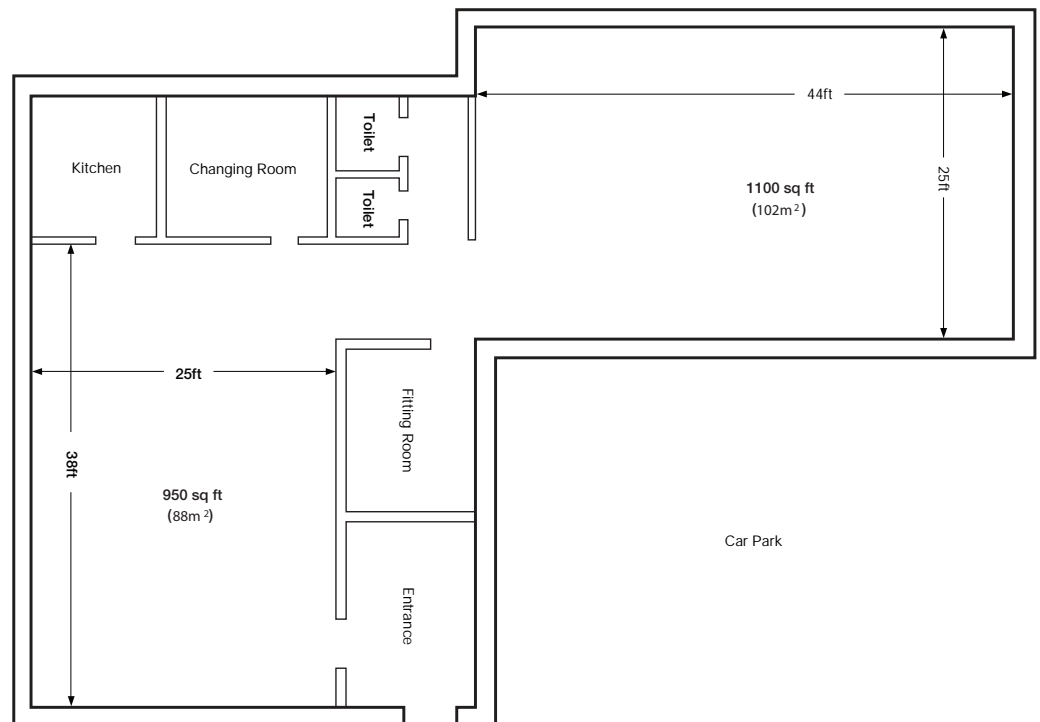


plan

Studio 5
Daily rate: £450.00

Studio 5



2,000 sq ft of easy-access split studio space.

With two main studio spaces on a distinctive L-shaped floorplan the Parish Rooms provide a highly flexible working environment. Each space can be used as a studio in its own right, or the smaller space can be used as a holding area for the main studio - very useful, we've found, when dealing with large numbers of people. Ground floor location and direct access to the main studio through large double doors make this space ideal for large-scale shoots.

- 1,100 sq ft white floor studio space
- 950 sq ft wooden floor furnished area
- Ground floor access
- Large double doors for loading in
- Fully-equipped kitchen
- Separate changing and fitting rooms
- Wireless network