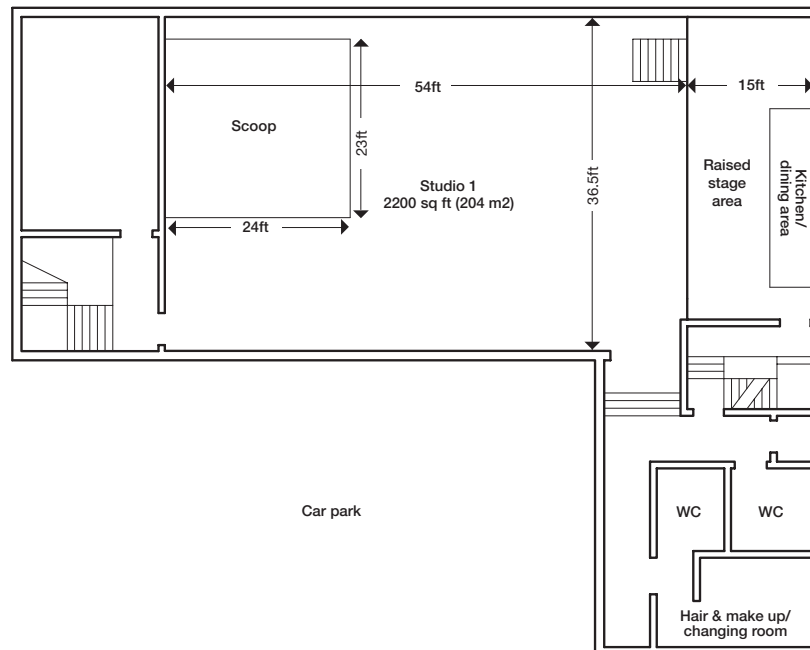


plan

Studio 1
Daily rate: £450.00

Studio 1



2,200 sq ft of adaptable working space with a distinctive character.

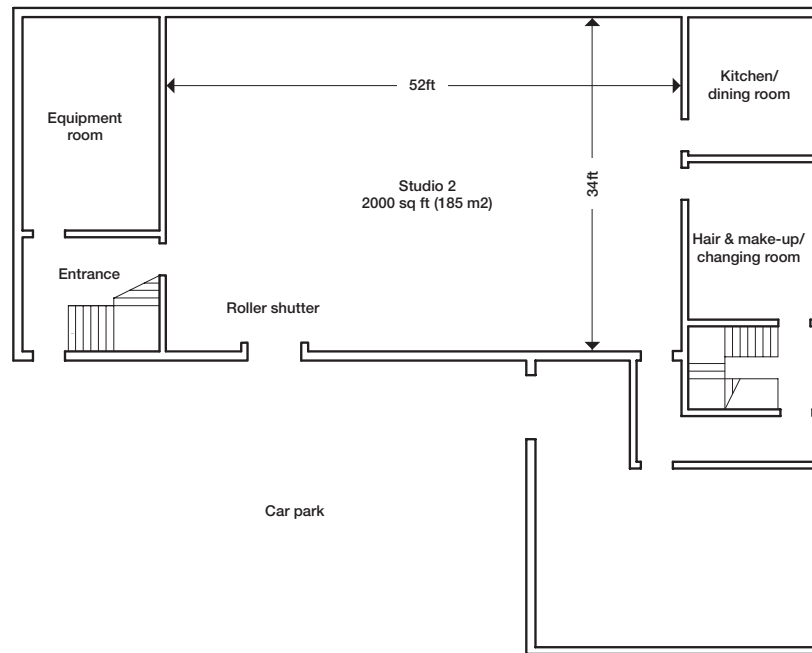
Located on the first floor of the Old School House under a high vaulted ceiling, Studio 1 provides a unique working environment. It is large - large enough to accommodate a 23 ft wide scoop. And it features a raised stage area at one end, for food prep or simply for watching the shoot unfold. Both entrances can be closed off to create a completely self-contained studio, separate from the rest of the building.

- 2,200 sq ft studio space
- Scoop H:15ft L:24ft W:23ft
- Pine floors
- Raised stage area
- Wireless network
- Fully-equipped kitchen with fridge, cooker and dishwasher
- Dining area
- Hair and make-up/changing room

plan

Studio 2
Daily rate: £400.00

Studio 2



A light spacious environment with a 16ft ceiling and crisp white walls.

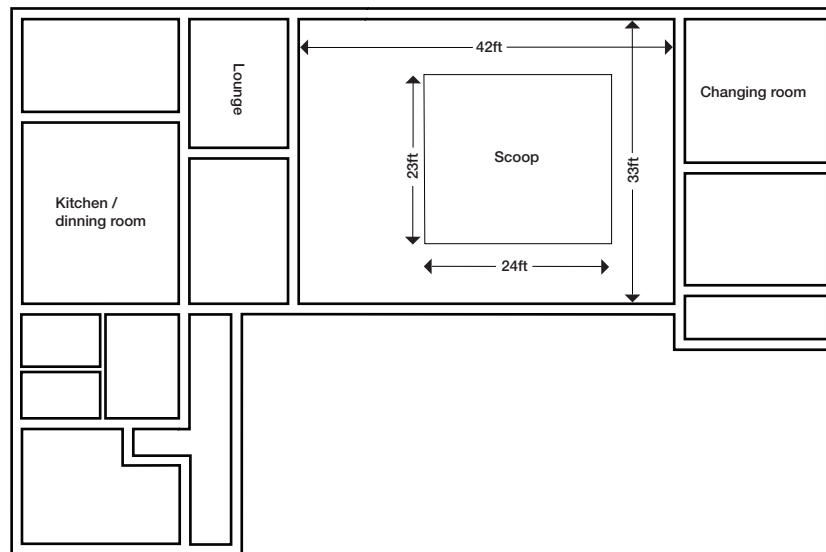
The combination of a stripped beech floor, 16ft high ceiling and clean white walls, makes Studio 2 an extremely light and airy photography studio. Situated on the ground floor, it has a roller shutter door that opens out onto the private car park – a large entrance that you can actually drive through. So the perfect space for shoots that require big items such as vehicles, machinery and equipment. This studio is fully-equipped with everything that is required to run a shoot efficiently and effectively.

- Wrap-around shooting wall
- Fitted kitchen/dining room – with a studio-view window
- Changing room
- Roller shutter facility – direct access to the car park
- Wireless network

plan

Studio 3
Daily rate: £450.00

Studio 3



Light, airy and fully-networked shooting space.

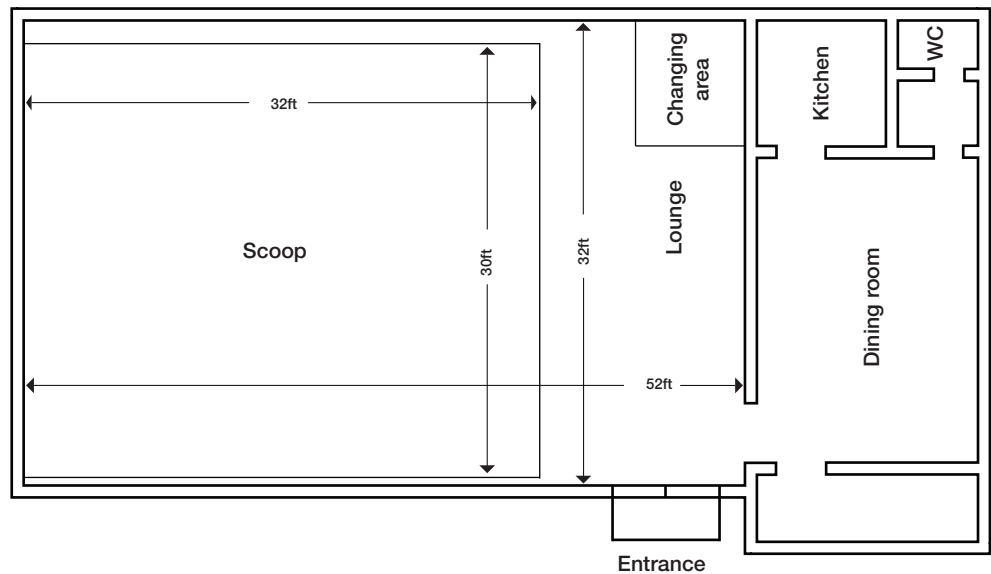
This digital photography studio is fully-networked and benefits from a flood of natural light. Situated on the top level there are 3 changing rooms and 2 entrances, these can be closed off for a self-contained studio space – perfect for private shoots featuring A-list celebrities, lingerie shoots, or exclusive product campaigns. As a former Victorian schoolhouse Studio 3 still holds its incredible original features, making it a great working environment. So everything that is needed for a smooth running shoot is right here.

- Scoop H:12ft L:24ft W:23ft
- 3 changing rooms
- Fully-equipped kitchen
- Separate dining area
- Wireless network

plan

Studio 4
Daily rate: £450.00

Studio 4



A versatile, practical ground floor shooting space.

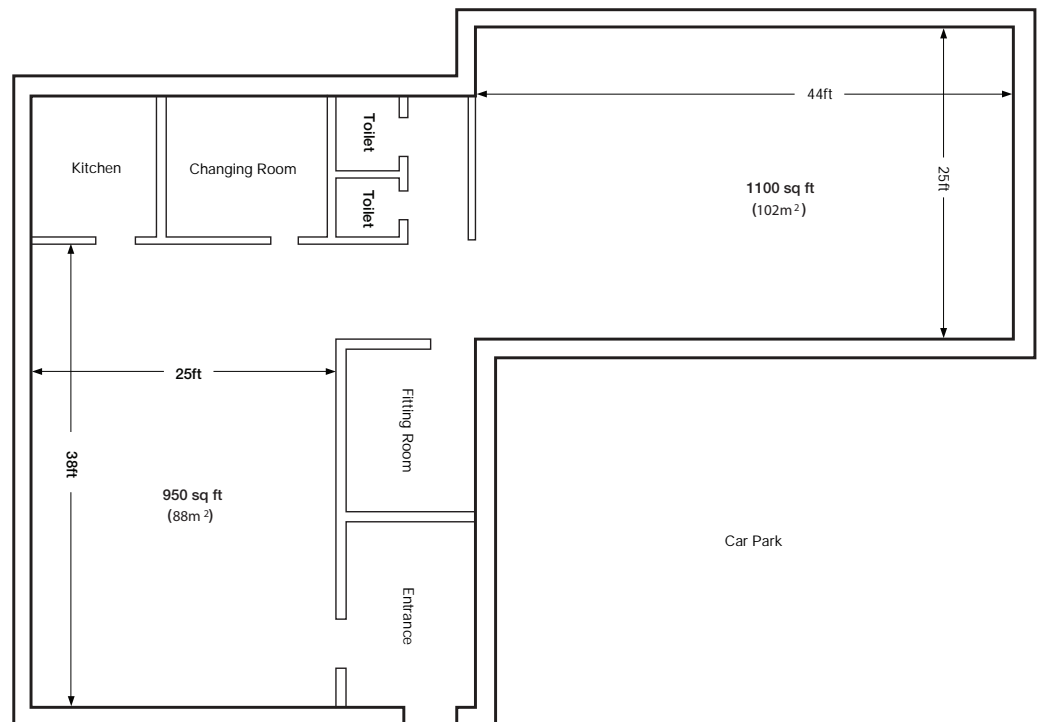
Studio 4 provides a light, open space capable of accommodating a cross-section of shoots - from small select ranges of food to high volume fashion. The space is comprehensively equipped with a changing area and lounge, as well as a separate kitchen and dining area. And oversized double doors opening directly onto the car park allow easy access for larger props and products.

- 1,100 sq ft white floor studio space
- 950 sq ft wooden floor furnished area
- Scoop H:12ft L:32ft W:30ft
- Ground floor access
- Large double doors for loading in
- Fully-equipped kitchen
- Separate changing and fitting rooms
- Wireless network

plan

Studio 5
Daily rate: £450.00

Studio 5



2,000 sq ft of easy-access split studio space.

With two main studio spaces on a distinctive L-shaped floorplan the Parish Rooms provide a highly flexible working environment. Each space can be used as a studio in its own right, or the smaller space can be used as a holding area for the main studio - very useful, we've found, when dealing with large numbers of people. Ground floor location and direct access to the main studio through large double doors make this space ideal for large-scale shoots.

- 1,100 sq ft white floor studio space
- 950 sq ft wooden floor furnished area
- Ground floor access
- Large double doors for loading in
- Fully-equipped kitchen
- Separate changing and fitting rooms
- Wireless network